



## 22 Grove End Road , Farnham, GU9 8RD

A 3 bedroom detached family house with 2 reception rooms, a conservatory and 2 bathrooms situated to the south of Farnham town close to local schools. There is driveway parking, a detached garage with storeroom and a garden. The house has recently been decorated and new carpets fitted. No onward chain.

**Price Guide £700,000**

# 22 Grove End Road

, Farnham, GU9 8RD



- Double aspect sitting room
- Utility room and cloakroom
- Driveway parking and detached garage with rear storeroom
- No onward chain
- Dining room and conservatory
- 3 bedrooms with wardrobes
- Recently decorated and new carpets
- Kitchen
- Family bathroom and en suite shower to bedroom 1
- Situated on the outskirts of Farnham town and close to local schools



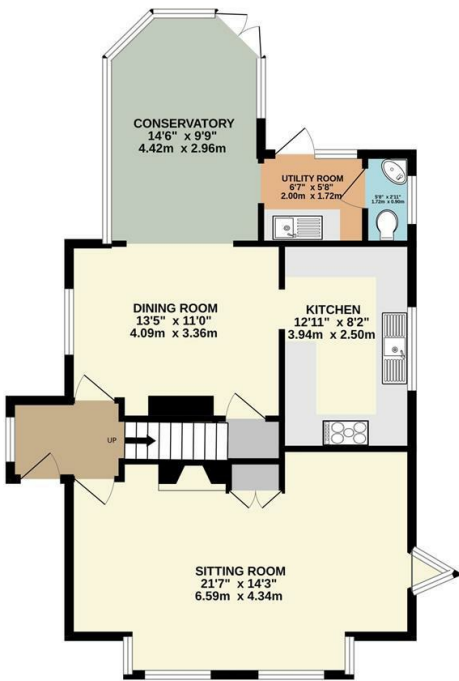
Directions

SAT NAV: GU9 8RD

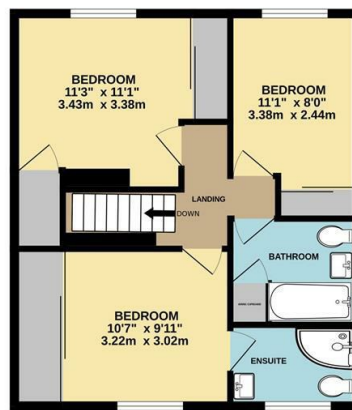


# Floor Plan

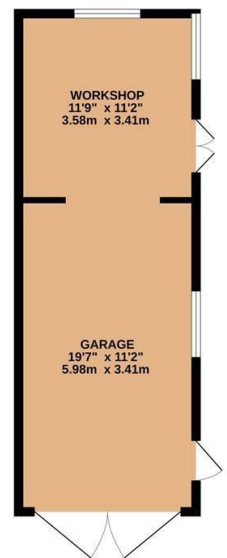
GROUND FLOOR  
764 sq.ft. (71.0 sq.m.) approx.



1ST FLOOR  
526 sq.ft. (48.8 sq.m.) approx.



GARAGE  
351 sq.ft. (32.6 sq.m.) approx.



TOTAL FLOOR AREA : 1641 sq.ft. (152.4 sq.m.) approx.

Whilst every attempt has been made to ensure the accuracy of the floorplan contained here, measurements of doors, windows, rooms and any other items are approximate and no responsibility is taken for any error, omission or mis-statement. This plan is for illustrative purposes only and should be used as such by any prospective purchaser. The services, systems and appliances shown have not been tested and no guarantee as to their operability or efficiency can be given.  
Made with Metropix ©2026

These particulars, whilst believed to be accurate are set out as a general outline only for guidance and do not constitute any part of an offer or contract. Intending purchasers should not rely on them as statements of representation of fact, but must satisfy themselves by inspection or otherwise as to their accuracy. No person in this firm's employment has the authority to make or give any representation or warranty in respect of the property.

